

Dieter's Nixie Tube Data Archive

This file is a part of Dieter's Nixie- and display tubes data archive

If you have more datasheets, articles, books, pictures or other information about Nixie tubes or other display devices please let me know.

Thank you!

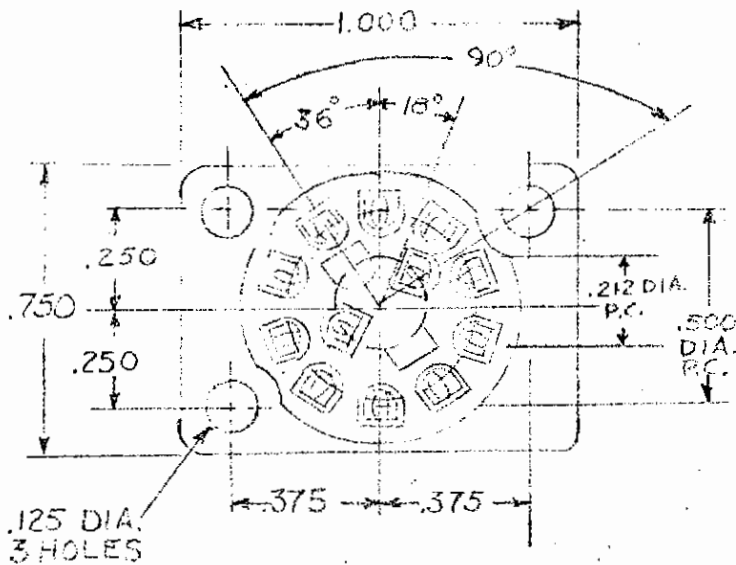
Document in this file	National Electronics – Nixie tube sockets RTS-49, RTS-50 – original outline drawing
Display devices in this document	RTS-11, RTS-49, RTS-50

M(2).QC.T

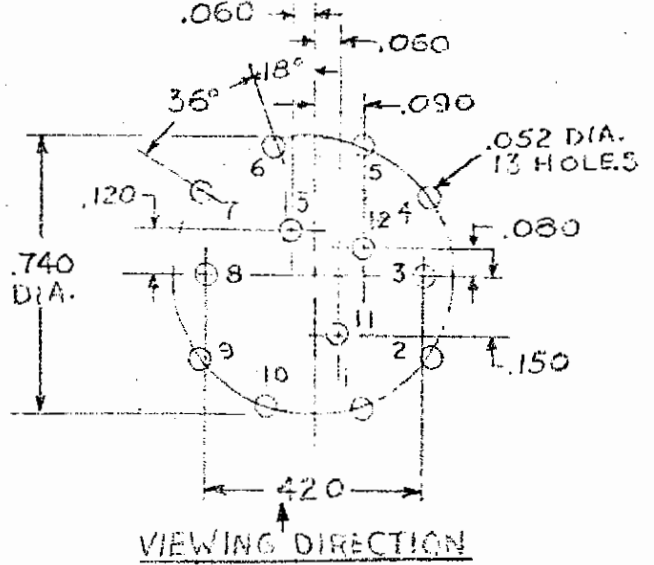
NO. 6K7-144
SUPDS.

QTY.	PRODUCT	NEXT ASSY DWG	NO.	DESCRIPTION OF CHANGE	SCO	DATE	BY
	5-597		1	REMOVE FRACTIONAL DIMENSIONS		8/5/69	K. H. P.
			2	ADD NOTE RE 6K7-144-1, -2, & -3-DIALYLYL PHTHALATE CASTING		6/14/70	J. F. S.
			3	REVIEWED FOR ∇	739	4/2/75	D. COX LDA

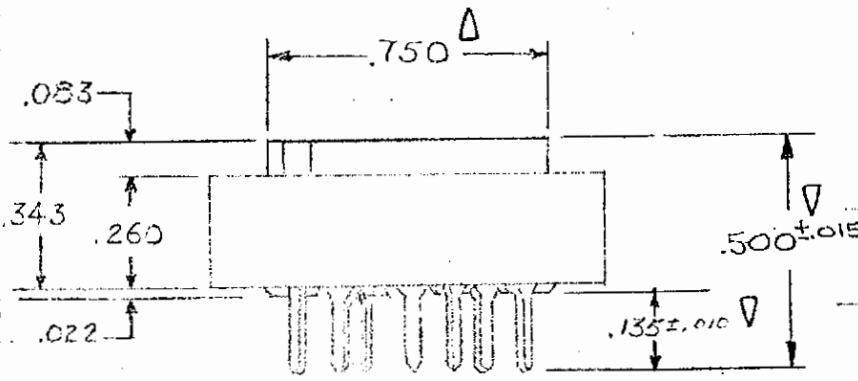
MOUNTING HOLE LAYOUT



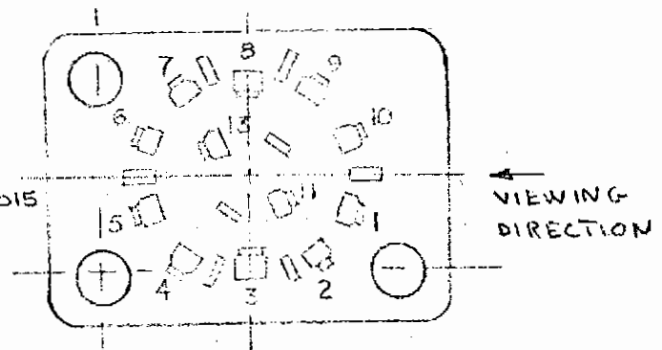
TOP VIEW



VIEWING DIRECTION



SIDE VIEW



BOTTOM VIEW

∇ - FOR NATIONAL ELECTRONICS USE ONLY

NOTE:

P. C. terminals must fit mounting hole layout. Omit contact in pos. 12 & 14.
 RTS-49 --- Diallyl phthalate casting with BeCu silver plated contacts.
 RTS-50 --- Black phenolic castings with brass, cadmium plated contacts.

NOTE: 6K7-144-1 = RTS-49
 6K7-144-2 = RTS-50
 6K7-144-3 = RTS-50 with #2195 pins per ST 51110

ITEM	QTY.	PART NUMBER	DESCRIPTION
<p>TOLERANCES UNLESS OTHERWISE SPECIFIED FRACTIONS $\pm 1/64$ DECIMALS $\pm .005$ ANGLES $\pm 1^\circ$</p>			
<p>DO NOT SCALE DRAWING</p>			
<p>DRAWN PB 12/15/68</p>		<p>SCALE</p>	
<p>CHKD. JW 11/16/68</p>		<p>PRODN. CHKD.</p>	
<p>ENG. APPD.</p>		<p>PRODN. APPD.</p>	
<p>MAT'L.</p>			
<p>MAT'L SPEC. NO.</p>			
<p>FINISH</p>			
<p>BLK.</p>			
<p>THIS DOCUMENT IS THE PROPERTY OF NATIONAL ELECTRONICS, INC., AND SHALL NOT BE COPIED, REPRODUCED, USED IN THE MANUFACTURE OR SALE OF APPARATUS OR DISCLOSED TO OTHERS WITHOUT PERMISSION.</p>			
<p>DIVISION: RO</p>		<p>NATIONAL ELECTRONICS, INC. GENEVA, ILLINOIS</p>	
<p>RTS-49 & 50 SOCKETS</p>			
<p>NO. 6K7-144</p>		<p>CHANGE - 3</p>	