

Dieter's Nixie Tube Data Archive

This file is a part of Dieter's Nixie- and display tubes data archive

If you have more datasheets, articles, books, pictures or other information about Nixie tubes or other display devices please let me know.

Thank you!

Document in this file	Philips datasheet – ZM1000
Display devices in this document	ZM1000, ZM1000R

INDICATOR TUBE

Long life cold cathode ten digit indicator tube for side viewing

QUICK REFERENCE DATA			
Numeral height		approx.	14 mm
Numerals		0 1 2 3 4 5 6 7 8 9	
Decimal point		to the left of the numerals	
Supply voltage	V_{b_a}	min.	170 V
Anode current, average	I_a		2.5 mA
peak	I_{a_p}	max.	12 mA



GENERAL

The numerals are 14 mm high and appear on the same base line allowing in-line read out. The ZM1000R is provided with a red contrast filter.

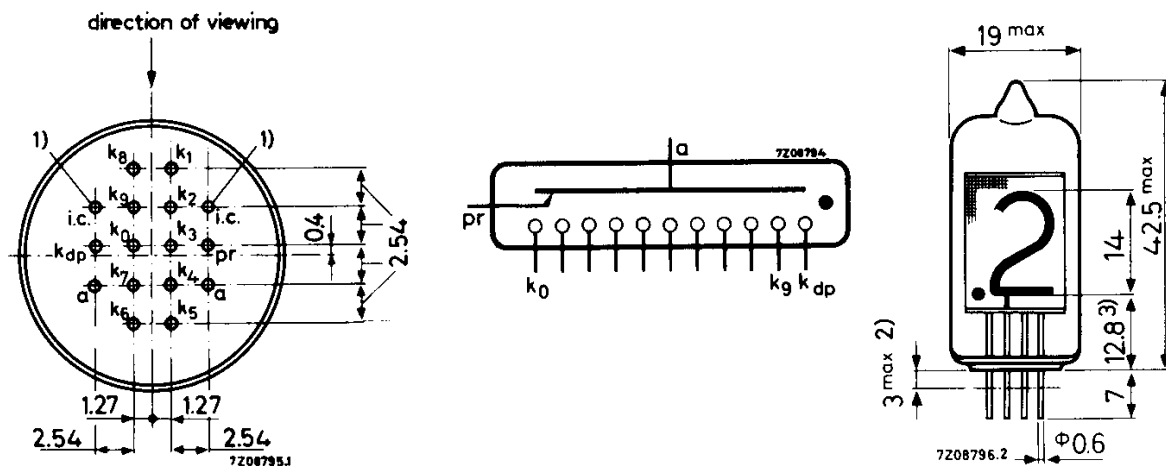
PRINCIPLE OF OPERATION

The tube contains ten cathodes in the form of ten numerals and one in the form of a decimal point; a primer, and one common anode. By applying a suitable voltage between the anode and one of the cathodes the corresponding numeral or the decimal point will be covered by a red neon glow.

The primer allows ionization without delay in strobe type or blanking applications.

DIMENSIONS AND CONNECTIONS

Dimensions in mm



- 1) Length of i.c. pins max. 2.8 mm.
- 2) Not tinned.
- 3) Standard deviation 0.13 mm

The deviations of the axis of the pins with respect to the true geometrical position cover an area of max. 0.3 mm diameter. The pin configuration is compatible with the reference grid for printed wiring according to IEC Publication 97 (0.1 in).

Mounting position: Any

Soldering

The pins may be dip-soldered at a solder temperature of max. 240 °C for maximum 10 seconds up to a point 5 mm from the seals.

Natural frequency

The natural frequencies of the numeral cathodes lie within the range from 300 Hz to 800 Hz.

ACCESSORIES

55701 Printed wiring mounting board (19 x 100 mm) on which the ZM1000 can be soldered; afterwards the combination can be mounted on a vertical printed wiring board carrying, e.g., the drive circuit. Can also be used with the snap-fit tube holder 55703.

55702 Tube socket (for 0.1 in grid). Phenolic. Tinned contacts.

55703 Snap-fit tube holder.

55704 Set of one left-hand and one right-hand end piece to complete the snap-fit indicator tube assembly.

CHARACTERISTICS AND OPERATING CONDITIONS

Ignition voltage	V_{ign}	max. 170 V
Maintaining voltage	V_m	see page 4
Anode current for coverage	I_a	min. 1.5 mA
(with or without decimal point and $V_{kk} = V_{kk_{min}} - V_{fl}$, see page 5)	I_a	max. 4.5 mA
Cathode selecting voltage	V_{kk}	see page 5
Cathode resistor, decimal point	R_{dp}	100 $k\Omega \pm 10\%$ ¹⁾
Primer resistor	R_{pr}	10 $M\Omega \pm 10\%$
Extinction voltage	V_{ext}	min. 118 V

¹⁾ Lower values of this resistor are permitted. The anode current should be increased by the increase of decimal point current resulting from the decrease of this resistor.

Typical operation over full temperature range 0 °C to +70 °C.

D.C. operation see pages 4, 5, 6 and 7.

Pulse operation

Peak currents up to 12 mA can be allowed provided the average current value does not exceed 2.5 mA.

To avoid excessive glow on "off" cathodes, the cathode selecting voltage should exceed 65 V. Minimum pulse duration 100 μ s.

For further information consult the manufacturer.

LIFE EXPECTANCY at $I_a = 2.5$ mA

This tube is manufactured on the same physical principles as other tubes in this category and it is expected that the life will be comparable, viz:

sequentially changing the display from one digit to the others every 1000 h or less		100 000 h
Mean time between failures	min.	200 000 h

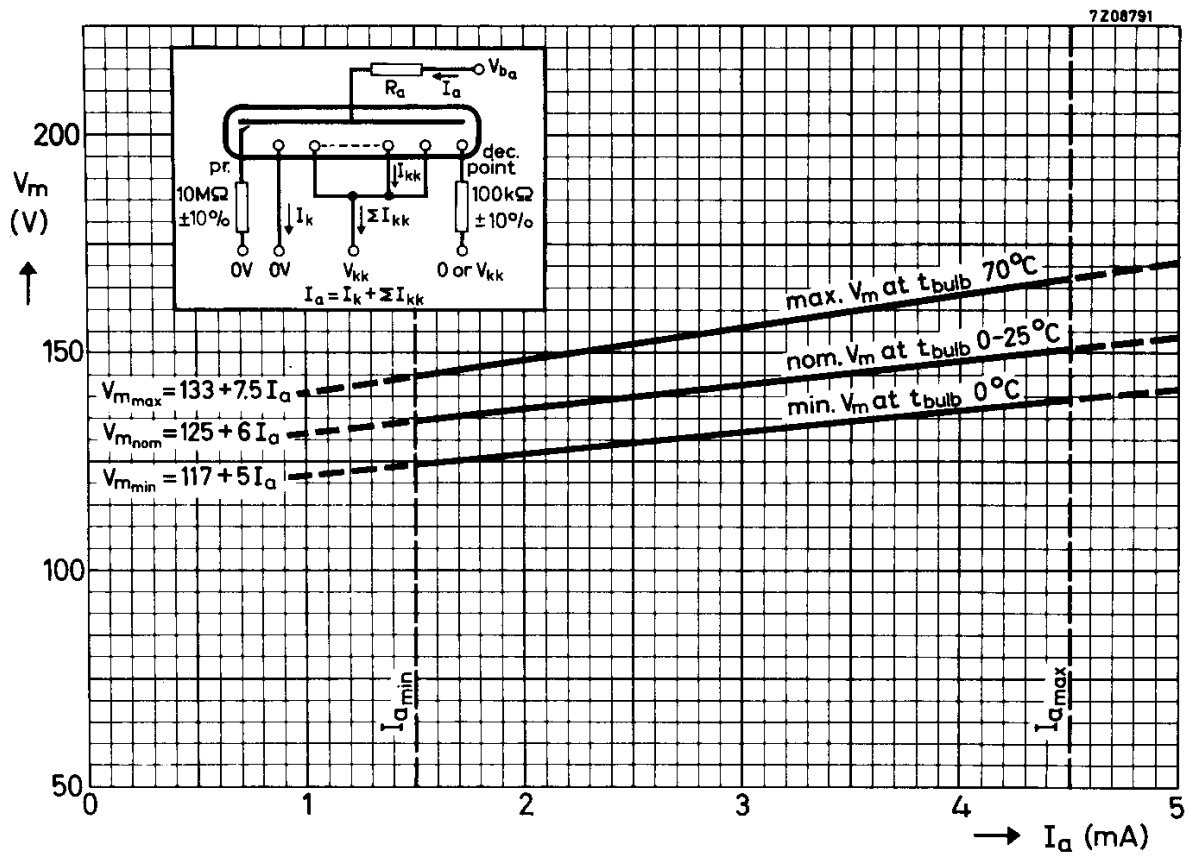
LIMITING VALUES (Absolute max. rating system)

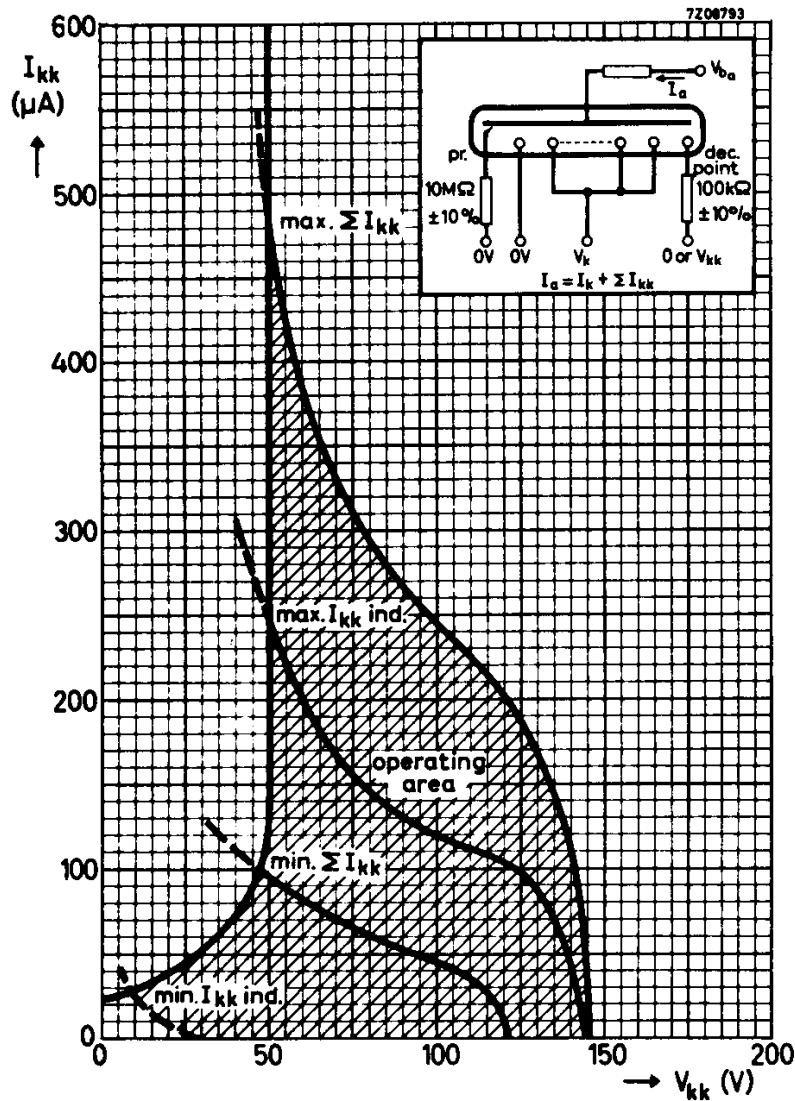
Anode voltage necessary for ignition	V_a	min.	170 V
Anode current,			
average during any conduction period	I_a	min.	1.5 mA
average ($T_{AV} = 20$ ms)	I_a	max.	4.5 mA
peak	I_{a_p}	max.	12 mA ←
Cathode selecting voltage	V_{kk}		see page 5
Bias voltage between anode and "off" cathodes	V_{bias}	max.	$V_{floating}$
Ambient temperature	t_{amb}	min.	-50 °C 1)
	t_{amb}	max.	+70 °C

¹⁾ Bulb temperatures below 10 °C result in a reduced life expectancy and changes in characteristics (see page 4).

For equipment to be used over a wide temperature range, "constant current operation" (high supply voltage with a high anode series resistor) is recommended.

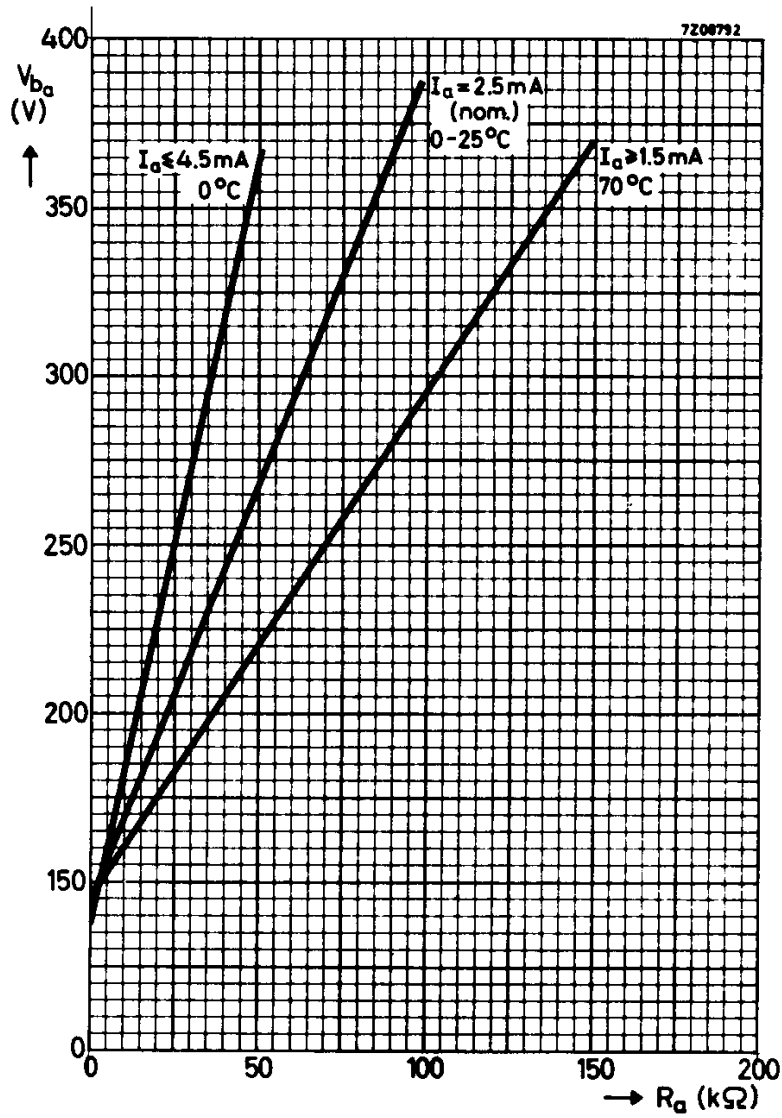
**ZM1000
ZM1000R**



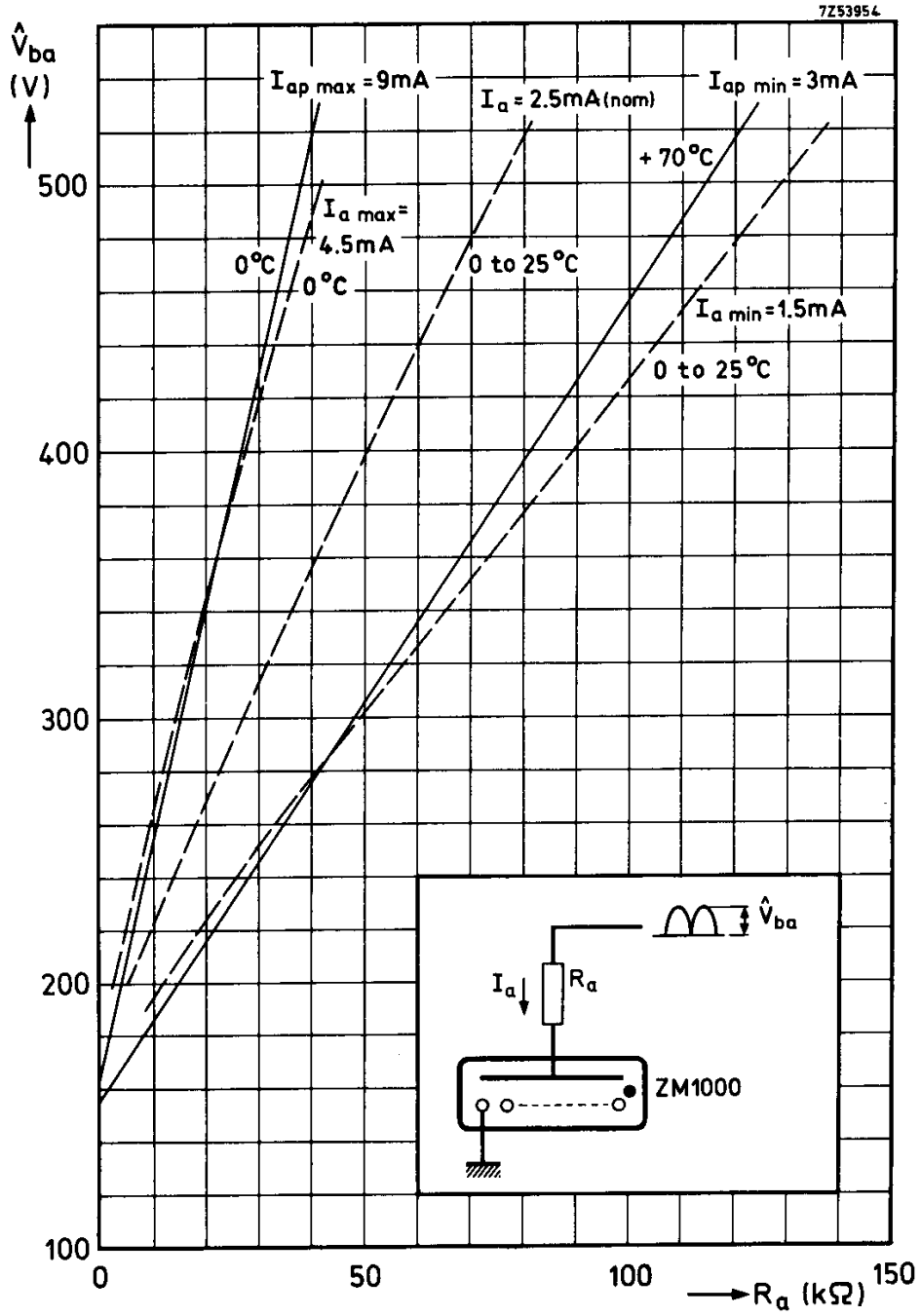


I_{kk} individual and ΣI_{kk} versus cathode selecting voltage V_{kk} at $I_a = 2.5$ mA.
 I_{kk} and ΣI_{kk} are proportional to the anode current within the operating range of I_a and with $V_{kk} = 0$ V to 100 V.

The curves are valid for instantaneous values and for average values of anode current.



Graph denoting the relationships of D.C. anode supply voltage and required anode resistor to remain within the recommended operating region.



PHILIPS

Data handbook



**Electronic
components
and materials**

ZM1000 ZM1000R

page	sheet	date
1	1	1970.04
2	2	1969.03
3	3	1970.04
4	4	1969.03
5	5	1969.03
6	6	1969.03
7	7	1969.03
8	FP	2000.04.21